

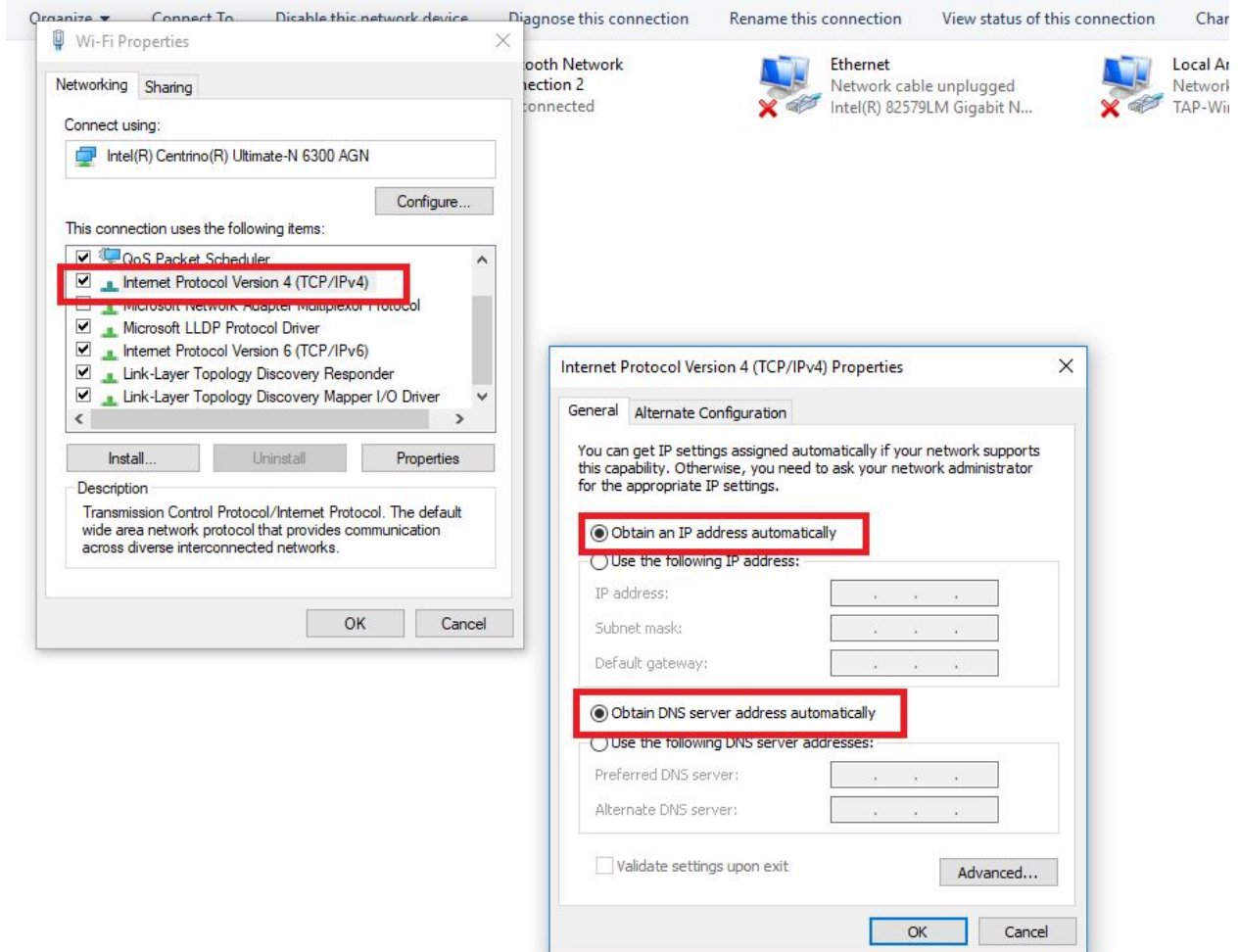
Problem:

Unable to open WiFi configuration page when connected to Wattie device WiFi

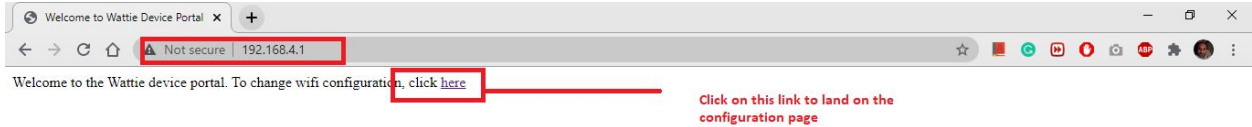
Steps to resolve the issue:

Make sure the device you are using (laptop/smartphone) to open the WiFi configuration page is configured with Automatic DNS.

- 1- Connect to the SSID of Wattie device using password **“Wattie321”** - *without quotes*
- 2- Go to the DNS settings of your Windows Laptop and make sure it is configured as shown below:



- 3- Open the IP address **“192.168.4.1”** in the browser to open the page for WiFi configuration and see the page like shown below.



4- You will land on page as shown below where you can select the desired SSID and enter password to connect device to the WiFi for internet connectivity. Select the SSID, enter password and hit **“Save & Test”** button on the page.

Configure WiFi

Please select from one of the 0 WiFi networks found

Network
Please select an SSID ...

password
password

Save & Test

Rescan

Check

```
{
  "sta_ip": "192.168.31.200",
  "ap_ip": "192.168.4.1",
  "status": "got_ip",
  "ssid": " "
}
```